

# POLAR BEAR EXPLORER

Nov 25th 2018 - Mar 3rd 2019

**Plymouth**  
Britain's Ocean City

## COULD YOU BE A POLAR BEAR EXPLORER?



20 Polar Bear cubs  
have been let loose  
in Plymouth's  
Waterfront – each  
with a special Bear  
Fact.



Find all 20 Bears  
in our trail and  
discover how you  
can help Polar  
Bears in the  
Arctic.



Complete your  
Explorer form and you  
will receive a special  
certificate. There's  
also a chance to win  
big prizes!



Campaign Partner:

**NMA** NATIONAL  
MARINE  
AQUARIUM

[visitplymouth.co.uk](http://visitplymouth.co.uk) #PolarBearExplorer

# Awareness of plastic pollution is becoming more prevalent in today's society, with key figures speaking out



8 million tons of plastic are dumped in our oceans every year



Around 7 million coffee cups are thrown away in the UK every day



Only 9% of the plastic produced globally since 1950 has actually been recycled



Things like straws, bags and cups are often only used just once and then thrown away. This is called single-use plastic



Spread the word! Talk to friends and family about how we can all work together to cut down the amount of single-use plastic in our everyday lives



Think of a Pledge and help look after Polar Bears and our Oceans.

*"It's now clear that our actions are having a significant impact on the world's oceans. Plastic has become an integral part of our daily lives. Every year some 8 million tons of it ends up in our ocean and there it can be lethal. Surely we have a responsibility to care for our blue planet. The future of humanity and indeed all life on Earth now depends on us."*

Sir David Attenborough, Blue Planet II, BBC One Television, Dec 2017

*"Our blue planet is facing one of the biggest threats in human history, trillions of pieces of plastic are choking the very lifeblood of our Earth. Scientists now believe that the Arctic has some of the highest levels of micro plastics in the world and it's found its way into the food chain. In the Arctic, one of the most remote, seemingly pristine places in the world, there is plastic from the bottom of the food chain all the way up to the very top. Unless we turn off the plastic tap the unrelenting deluge that enters our oceans every day simply will never stop. If we don't, the result will be catastrophic for all marine life. From the smallest creature to the largest mammal our planet depends on a healthy and thriving ocean for its very survival. We can save our ocean but we need to act before it's too late."*

Liz Bonnin, Drowning in Plastics, BBC One Television, Oct 2018

*"We're the first generation that knows we're destroying the planet and we could be the last that can do anything about it."*

Tanya Steele, Chief Executive, WWF

## Want to learn more about how you can help reduce single-use plastic?

Visit:

[BBC.co.uk/plasticsaction](http://BBC.co.uk/plasticsaction)

[WWF.org.uk](http://WWF.org.uk)

[mcsuk.org](http://mcsuk.org)

[skyoceanrescue.com](http://skyoceanrescue.com)

[greenpeace.org.uk](http://greenpeace.org.uk)

# BE A POLAR BEAR EXPLORER

Polar Bears need our help and they're bringing an important message to Plymouth this winter.

From November 25th through until March 3rd, 20 Polar Bear cubs will be let loose across Plymouth's Waterfront. The cubs will be hiding in Sutton Harbour, The Barbican, Hoe, Millbay and Royal William Yard. Each cub will have a Bear Fact with them, telling us about the Arctic and the oceans, how plastic is affecting their home and how we can all help.

Your task is to become a Polar Bear Explorer and find each of the Polar Bear cubs with their Bear Facts. Using the Explorer form on page 11, write down the key word from each of the cubs' Bear Facts. WWF, Greenpeace and the National Marine Aquarium have each helped to inform the Bear Facts.

Once you've found all 20, complete the Explorer form with your details and make your pledge to help Polar Bears by reducing single-use plastics at home, at school and in the workplace.

Deliver your Explorer form to one of the Arctic Post Boxes at either the National Marine Aquarium, the Barbican Tourist Information Centre or Le Bistrot Pierre. You can also mail it to: Polar Bear Explorer, Plymouth Waterfront Partnership, Ballard House, West Hoe, Plymouth PL1 3BJ or enter online at [visitplymouth.co.uk](http://visitplymouth.co.uk).

Your completed form will then be entered into a draw to win one of the great prizes on offer.

Good luck!



This brochure has been produced from materials that have been sourced in an environmentally-friendly, socially responsible and economically viable manner.

#### Disclaimer

Brochure content for information and correct at time of going to print. See [visitplymouth.co.uk](http://visitplymouth.co.uk) for T&Cs.



# Christmas

AT THE

 **AQUARIUM** 



December 2018

Marine Conservation Charity Number 1032491




# SLEEPING WITH SHARKS

**FORGET  
COUNTING SHEEP,  
ARE YOU BRAVE  
ENOUGH TO  
COUNT SHARKS?**



For more details about our world famous Sleeping with Sharks Sleepovers head to [www.national-aquarium.co.uk](http://www.national-aquarium.co.uk)

**Connecting us with our Oceans**

A polar bear is standing upright on a large, melting ice floe in the Arctic. The bear is looking directly at the camera with a serious expression. The ice is white and blue, with some dark rocks visible in the background.

# JOIN THE FIGHT FOR YOUR WORLD

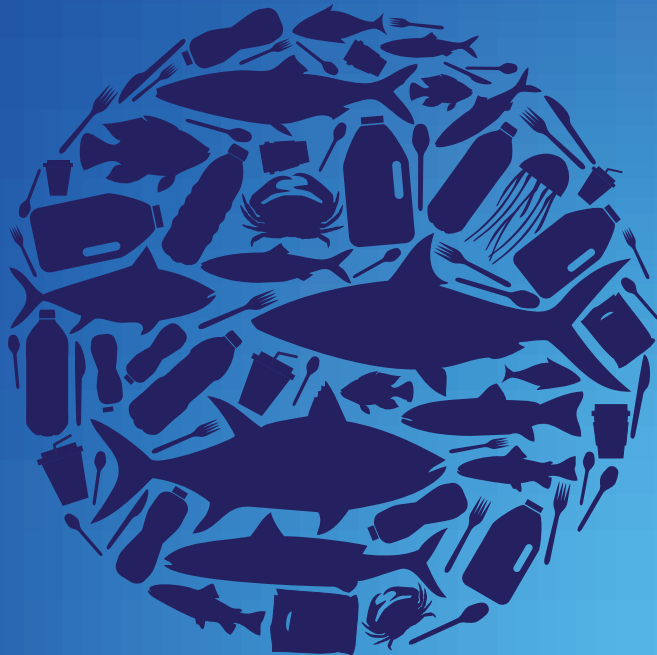
SEARCH WWF FOR YOUR WORLD



WWF

FOR YOUR WORLD

# PLYMOUTH'S PLAN FOR PLASTICS



As Britain's Ocean City, Plymouth is leading the way in the world-wide effort to cut out single-use plastics in our natural environment. Across the city, communities, businesses, educational organisations and research establishments have all worked together to create the Plan for Plastics.

Our plan is framed around four fundamental principles:

- **AVOID**
- **RECYCLE**
- **INNOVATE**
- **CONNECT**

We've already achieved a Plastic Free Plymouth Waterfront, can you help us achieve more?

Find out more from:  
[visitplymouth.co.uk/explore/plan-for-plastics](https://www.visitplymouth.co.uk/explore/plan-for-plastics)  
[#PlasticsPledgePlym](https://twitter.com/PlasticsPledgePlym)



# FIND THE POLAR BEARS!

Arctic Post Boxes can be found at the **National Marine Aquarium, Barbican Tourist Information Centre and Le Bistrot Pierre**

The Barbican Tourist Information Centre – opening times: 9am - 5pm Monday to Friday, 10am - 4pm Saturday, Closed on Sunday

1	<b>National Marine Aquarium</b>	(Sutton Harbour)	10am - 5pm Monday to Sunday
2	<b>Rockfish</b>	(Rope Walk, Sutton Harbour)	12pm - 9.30pm Monday to Sunday
3	<b>HonkyTonk Wine Library</b>	(N E Quay, Sutton Harbour)	10am - 9pm Tuesday Wednesday and Thursday, 10am - 10pm Friday and Saturday, 11am - 5pm Sunday. Closed on Monday
4	<b>Daisy's Tea Rooms</b>	(Harbour Avenue, Sutton Harbour)	10am - 4pm Tuesday to Sunday, Closed on Monday
5	<b>Boston Tea Party</b>	(Vauxhall Street, The Barbican)	7am - 7pm Monday to Saturday, 8am - 7pm Sunday
6	<b>Harbour Restaurant</b>	(The Barbican)	11am - 10pm Monday to Sunday
7	<b>B-Bar and Barbican Theatre</b>	(Castle Street, The Barbican)	11am - 10pm Monday to Sunday
8	<b>Parade Antiques</b>	(New Street, The Barbican)	9.30am - 5pm Monday to Sunday
9	<b>Kaya Gallery</b>	(Southside Street, The Barbican)	10.30am - 4.30pm Monday to Sunday
10	<b>RNLI Shop</b>	(Southside Street, The Barbican)	10.30am - 4pm Monday to Sunday
11	<b>Valenti's Gelato-Artisan</b>	(Citadel Ope, The Barbican)	12pm - 10pm Tuesday to Friday, 11am - 10pm Saturday and Sunday. Closed on Monday
12	<b>Atwell Martin</b>	(Southside Street, The Barbican)	9am - 5.30pm Monday to Friday, 9am - 4pm Saturday, Closed on Sunday
13	<b>Lang Town and Country</b>	(Notte Street)	9am - 5.30pm Monday to Friday, 9am - 4pm on Saturday. Closed on Sunday
14	<b>Crowne Plaza Plymouth</b>	(Armada Way, The Hoe)	24 hours a day, 7 days a week
15	<b>The New Continental Hotel</b>	(Millbay Road)	24 hours a day, 7 days a week
16	<b>The Duke of Cornwall Hotel</b>	(Millbay Road)	24 hours a day, 7 days a week
17	<b>Salumi</b>	(West Hoe Road)	11am - 10.30pm Monday to Sunday
18	<b>Quadrant Wharf Marketing Suites</b>	(Cargo 2, Millbay Road)	10am - 5pm Monday to Sunday
19	<b>The Hutong Cafe</b>	(Cremyll Street, outside RWY gates)	7.30am - 5pm Monday, Wednesday and Thursday, 7.30am - 4pm Friday, 8am - 4pm Saturday and Sunday. Closed on Tuesday
20	<b>Le Bistrot Pierre</b>	(Royal William Yard)	7am - 10pm Monday to Friday, 8am - 10pm Saturday, 8am - 9pm Sunday

Correct at time of going to print.



RICH

Mayflower  
Marina

Royal  
William  
Yard

Devil's  
Point

Fires  
Bay

19

20

DUNNIFORD  
BAR

SIM REEVE

PO



# Key

-  Polar Bear Cub (markers are approximate)
-  Arctic Post Box
-  Waterfront Walkway
-  Sutton Harbour Trail



Royal William Yard - Barbican Ferry

# HOW TO ENTER

20 Polar Bear cubs have been let loose in Plymouth's Waterfront – each with a special Bear Fact message. Can you find them?

Follow the Explorer's map on pages 8 and 9 to locate the Polar Bear cubs.

Find all 20 of them and read their Bear Facts, then use the key word to complete this Explorer entry form.

Write your answers in the boxes on the next page, make your 'plastic pledge' to help Polar Bears and the oceans, then fill out your details and submit your Explorer entry form online at [visitplymouth.co.uk](http://visitplymouth.co.uk) or by hand to any of the three Polar Bear Explorer Post Boxes, located at:

National Marine Aquarium (Sutton Harbour); Barbican Tourist Information Centre; Le Bistrot Pierre (Royal William Yard)

A very special Polar Bear Explorer certificate will be issued to you once you've submitted your completed Explorer entry form – you could even have a chance of winning a fantastic prize!

Correctly completed Explorer entry forms will be entered into a draw to win one of more than 30 great prizes including:

10 x Family tickets for the National Marine Aquarium

5 x Blue Planet The Collection boxsets

3 x Polar Bear Adoption Packs with WWF

A family ticket to Dartmoor Zoo

Lunch for 4 people at The Lookout (*at the Mount Batten Watersports and Activities Centre*)

4 x Create Your Own Sundaes at Valenti's Gelato Venue

A £40 Voucher to spend at Steve's Brasserie

A viewing of the Mount Batten Tower for up to 12 people

A 3 course Sunday lunch for 2 people at The Fig Tree @ 36

A dinner for 2 voucher (up to £45) at The Duke of Cornwall Hotel

2 x B-Bar Comedy Night tickets

A 6 Months Club Continental Gym Membership

## Don't Miss!

Polar Bear activities and talks at the National Marine Aquarium. Enjoy lots of family fun during Half Term February 18th – 22nd and International Polar Bear Day February 27th. Check out [visitplymouth.co.uk](http://visitplymouth.co.uk) for details.



For the full list of prizes and the terms and conditions go to: [visitplymouth.co.uk](http://visitplymouth.co.uk)

  
1

6

11

16

2

7

12

17

3

8

13

18

4

9

14

19

5

10

15

20

My name is:

My age is:

Name of parent/guardian:

Telephone number of parent/guardian:

Email address of parent/guardian:

**Our family plastic pledge. We already** *(tick all that apply):* Use reusable bottles and cups Use bamboo or paper straws Carry a reusable shopping bag Use bamboo toothbrushes Recycle more and throw away less rubbish

Other:

Can you make 3 more changes at home, at school or at work? What could they be?

**Well done on completing the Polar Bear Explorer!**

Don't forget to collect your Polar Bear Explorer Certificate – pick it up today from the National Marine Aquarium reception (see their website for opening times). The Polar Bear Explorer runs from Sunday November 25th 2018 to Sunday March 3rd 2019. Closing date for all completed entries is Tuesday March 5th 2019.

Plymouth Waterfront Partnership will share information with Visit Plymouth and Surfers Against Sewage. Please tick the box if you would like to receive email updates about competitions and events from Plymouth Waterfront Partnership and Visit Plymouth.

Only fully completed entries will be eligible for entry into the prize draw and only one entry allowed per person. \*For full terms and conditions visit: [visitplymouth.co.uk](http://visitplymouth.co.uk)

# WINTER AT THEATRE ROYAL PLYMOUTH

Warm up this Winter and enjoy a hot drink in our eco-friendly VegWare takeout cups from our café! Keep an eye out for lots of fantastic family entertainment at Theatre Royal Plymouth.



**The Gingerbread Man**

Tue 04 Dec 2018  
> Sat 19 Jan 2019



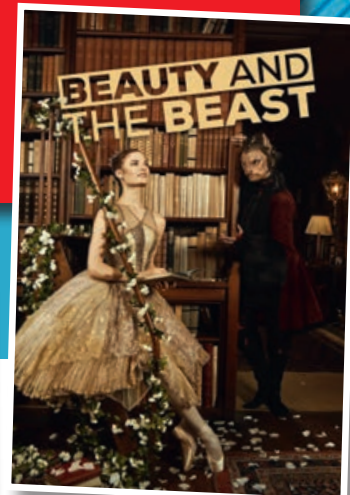
**Dick Whittington**

Fri 14 Dec 2018  
> Sat 12 Jan 2019



**Horrible Histories**

Tue 19  
> Sat 23 Feb 2019



**Birmingham Royal Ballet**

**Beauty and the Beast**  
Wed 06 > Sat 09 Mar 2019



Theatre  
Royal  
Plymouth